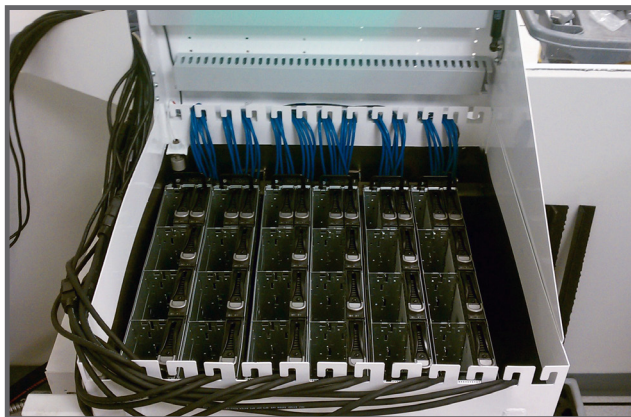
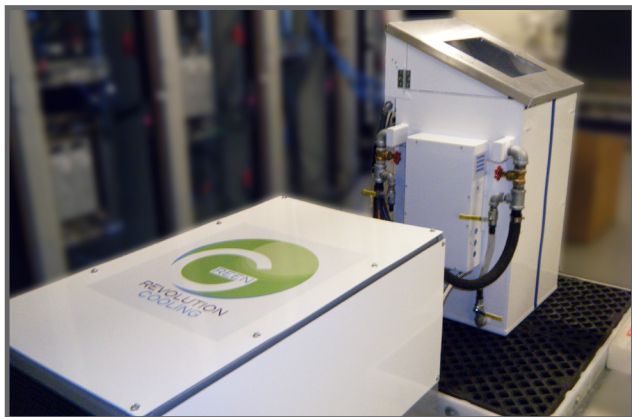




THE CARNOTJET™ SYSTEM

13 EVALUATION SYSTEM DATASHEET



13U CARNOTJET™ evaluation system

Test-drive submersion cooling

The CARNOTJET™ Evaluation Unit is a self-contained 13U system available on short term lease for evaluation purposes. The system consists of a Rack and Pump Module and is designed to be up and running in an afternoon.

Evaluation units are designed to withstand rigorous testing. The system will accept any standard 19" rack-mountable server, and can support up to 6 kW of true (fanless) compute load. The full-featured Pump Module may be configured to reject server heat to air (via radiator) or to a water loop (via 1" piping).

The evaluation program is designed to last 30-60 days. Efficiency and performance expectations are determined ahead of time. There is a nominal leasing fee during the evaluation period.

[Right] Installation schematic for 13U CARNOTJET™ Evaluation system (measurements in inches)

EFFICIENCY

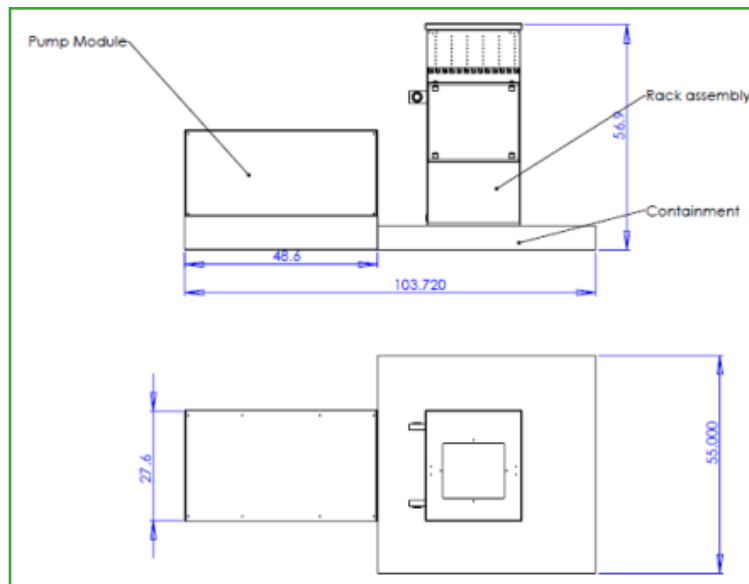
The industry's most efficient cooling solution:

- 90-95% reduction in cooling power
- 10-25% reduction in server power
- 40-45% reduction in total data center power

PERFORMANCE

Highest performance available today:

- Server components kept 10-15°C cooler
- Supports blades, trays, and GPU or MIC-accelerated servers



CARNOTJET™ 13U Evaluation System Specifications

Model	CNJ-EVL		
Capacity	Number of Racks	1	
	Number of Pump Modules	1	
	Max Server Heat	6 kW (radiator model)	8 kW (water loop model)
	Number of Servers	13U	
Dimensions	Rack Length	30"	76 cm
	Rack Width	26"	66 cm
	Rack Height (lid closed)	51"	130 cm
	Rack Mass (empty)	150 lbs	68 kg
	Rack Mass (filled with coolant)	675 lbs	306 kg
	Pump Module Length	50"	127 cm
	Pump Module Width	31"	79 cm
	Pump Module Height	29"	74 cm
	Pump Module Mass	300 lbs	136 kg
Infrastructure Requirements	Access to power Level installation surface Protection from the elements Access to water (optional)		
Electricity	Primary and Secondary Circuit		
	Maximum Power	2.4 kW	
	Voltage	100-240 VAC, 50-60 Hz	
	Phase	1Φ	
	Current	<20 amps	
Water Connection [Optional]	Water Input Temperature	37° F - 122° F	3° C - 50° C
	Water Output Temperature	39° F - 129° F	4° C - 54° C
	Flow	Up to 120 gpm	Up to 7.5 L/sec
	Pressure Loss	<10 psi	<69 kPa
	Inhibitors Required	N/A	
	Connections	1" NPT	
Operating Guidelines	Ambient Temperature	0°F - 135°F	-18° C - 57° C
	Secondary Containment	IBC/IFC requires secondary containment for 110% of the largest container (included)	
	Fire Suppression	Standard data center fire suppression	
	Operating Humidity	Noncondensing	
	Site Requirements	Level floor	
Data Reporting	Data Measurements:	Heat load Coolant pressure Estimated filter life Pump command Operating temperatures (water and coolant) Rack temperature (multiple locations) Power consumption Liquid level (multiple locations) Heat rejection System health and diagnostic output	
Warranty	Lease period includes full support, including 24/7 system health monitoring by GRC technicians.		

GREEN REVOLUTION COOLING
5555 N LAMAR BLVD, STE D-111
AUSTIN, TX 78751

(512) 692-8003
WWW.GRCOOLING.COM